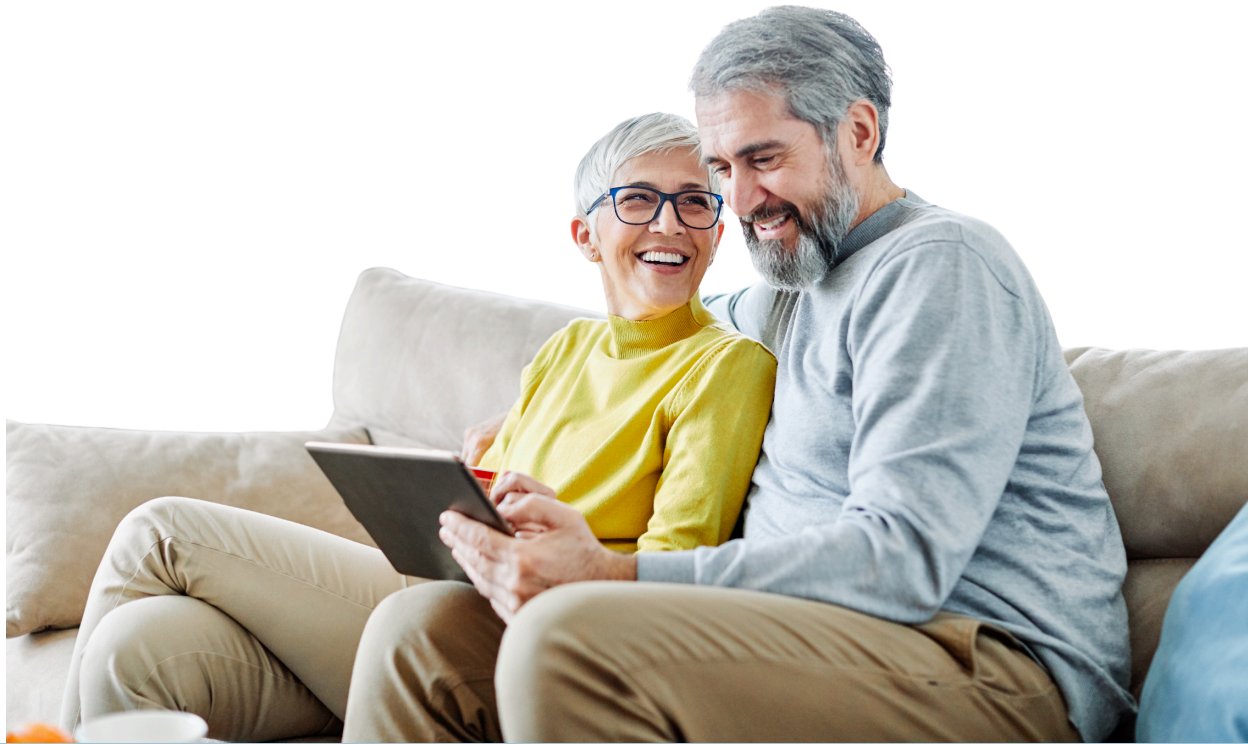


MEDICARE: MAKE IT YOURS

MEDICARE

OPEN ENROLLMENT
OCTOBER 15 - DECEMBER 7



Wisconsin State Health Insurance Assistance Program (SHIP)

FREE Open Enrollment Organizer

800-242-1060 | dhs.wisconsin.gov/medicare-help

Part D Helpline: 855-677-2783



SHIP

State Health Insurance
Assistance Program

MAKE CONFIDENT, INFORMED DECISIONS DURING MEDICARE OPEN ENROLLMENT.

Begins **October 15**
Ends **December 7**

Medicare Fall Open Enrollment is the time to evaluate and change your Medicare coverage. Review all materials sent to you from your plan - costs, coverage, providers and pharmacies in network can change annually as well as your personal health needs.

Work with SHIP counselors to understand your options.

How can I get help comparing Medicare plans?

- Find your local **Aging and Disability Resource Center (ADRC)** at **844-WIS-ADRC (947-2372)**
- Find an in-person event
- Speak with a **SHIP counselor** **800-242-1060**
- Make a phone appointment

Medicare Savings Programs

Medicare Savings Programs help you to pay for some of your Medicare costs related to health care, excluding prescriptions.

The Qualified Medicare Beneficiary program

- QMB helps pay for your Parts A and B annual deductible, Part B premium, and other copayments you may have at the doctor/hospital.

The Specified Low-Income Medicare Beneficiary program

- SLMB pays for your monthly Part B premium.

The Qualified Individual program

- QI pays for your monthly Part B premium.

The Qualified Disabled and Working Individual program

- QDWI is for people with Medicare who are under age 65, disabled, and do not qualify for free Medicare Part A because they returned to work. QDWI pays for Medicare Part A premiums.

Extra Help

Extra Help helps you pay for your Medicare Part D (prescription drug) costs. If you get Extra Help (also known as LIS), you will pay nothing for your Medicare drug plan premium or plan deductible and you will pay a reduced copay for both generic and brand-name drugs.

Even if you do not get other types of Medicaid, you may be able to get help from a Medicare Savings Program. Call the ADRC and ask about **Extra Help** and **Medicare Savings Programs**.



WI SHIP Medicare Open Enrollment Planning Form

Do NOT return this form. This form is for your reference and Medicare Open Enrollment counseling preparation.

Last Name: _____ First Name: _____

Zip Code: _____ County: _____

Phone Number: _____ Email Address: _____

Are you currently enrolled in a Medicare Advantage Plan (HMO or PPO)? ☐ YES ☐ NO

Name of plan? _____

Do you receive help with your Medicare Costs? (Check all that apply) ☐ YES ☐ NO

What is your gross monthly income? _____

☐ Part B Premiums & Prescriptions☐ Prescription Coverage

Name of your Medicare Supplement Plan (Medigap): _____

Do you have a Medicare Prescription Drug Plan (Part D) with a Zero Premium? ☐ YES ☐ NO

What is your preferred pharmacy? _____

Pharmacy address: _____

[illegible]

WHAT IS SHIP?

The **State Health Insurance Assistance Program (SHIP)** provides free, unbiased health insurance information, counseling, and assistance to people with Medicare. The Wisconsin Department of Health Services provides grant funding to aging and disability resource centers (ADRCs), aging offices, clinics, and other agencies to provide SHIP. SHIP does not sell insurance or get money from companies.”

Who are SHIP Counselors?

SHIP counselors are trained by the state. They provide unbiased, individualized information and assistance with Medicare.



**Contact your local ADRC or SHIP agency
for free help with Medicare today!**

Ask about in-person events or
book a phone appointment today!

call **844-947-2372**
to locate your local ADRC

www.dhs.wisconsin.gov/adrc/index.htm



This [project/publication/program/website, etc.] [is/was] supported by the Administration for Community Living (ACL), U.S. Department of Health and Human Services (HHS) as part of a financial assistance award totaling \$1,061,673 with 100 percent funding by ACL/HHS. The contents are those of the author(s) and do not necessarily represent the official views of, nor an endorsement, by ACL/HHS, or the U.S. Government.”



SHIP
State Health Insurance
Assistance Program