



The

Dish

With the
GWAAR
Nutrition Team



Week of February 24, 2020

Sauk County Expands Their Dining Options

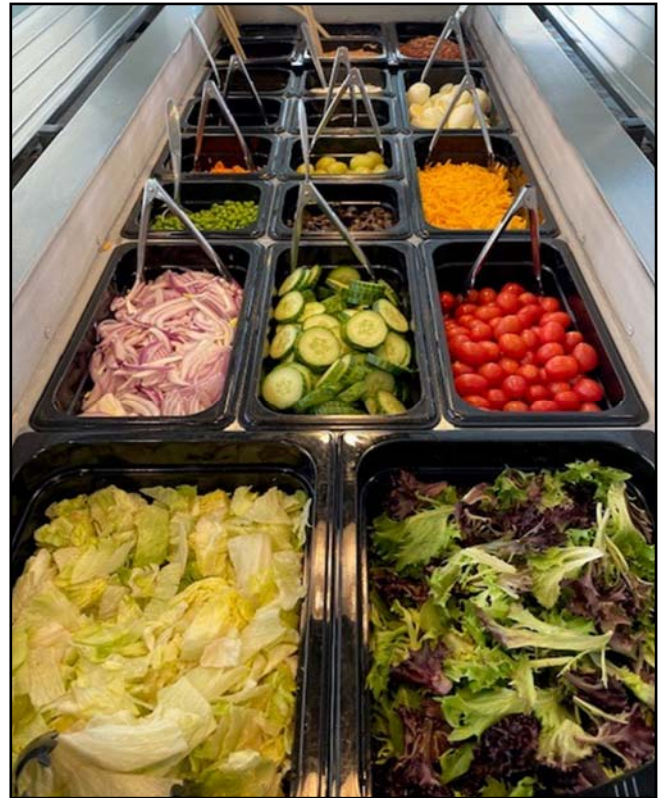
To provide older adults in Sauk County a greater opportunity for this new style of dining, the ADRC of Eagle Country/Sauk County recently partnered with two local establishments, the Reedsburg Country Club and the Four Star Restaurant in Baraboo, to open new My Meal, My Way programs. The Reedsburg Country Club offers a soup and salad bar on Tuesdays and Thursdays from 11:30 a.m.-1:30 p.m. The Four Star Restaurant in Baraboo offers a nutritionally analyzed menu with both breakfast and lunch choices and is open on Mondays and Wednesdays from 10:30 a.m.-12:30pm.

Business is booming! At the Reedsburg Country Club in January, they served an average of 35 individuals per day and added over 200 new participants! One diner says that this option is perfect for her and her husband. She is a vegan and he is not so they can both get what they want with the soup and salad bar option. Check out the picture of the salad bar at the Reedsburg Country Club – talk about YUM! Additionally, a whopping 67 diners joined in for the Grand Opening of the Four Star Restaurant!

2019 Senior Dining Participant Satisfaction Surveys

If you have not entered your surveys into the SurveyMonkey links, please let Pam or Jean know. We have a couple programs that have not done so. We are happy to help! Once we have them all entered, we can run the state wide data.

Thanks to all of you who've entered your surveys!



One of the successful new options introduced by the ADRC of Eagle Country/Sauk County is a twice-weekly soup and salad bar at the Reedsburg Country Club.

Important Dates to Remember!

WAND Conference

April 28 and April 29, Stevens Point

Spring is in the air! Look for the conference registration form coming to an email box near you.

Upcoming ServSafe Classes- Save the Date

June 10, 2020, Stevens Point

August 5, 2020, Rhinelander

Registration forms and more information will be coming shortly.

