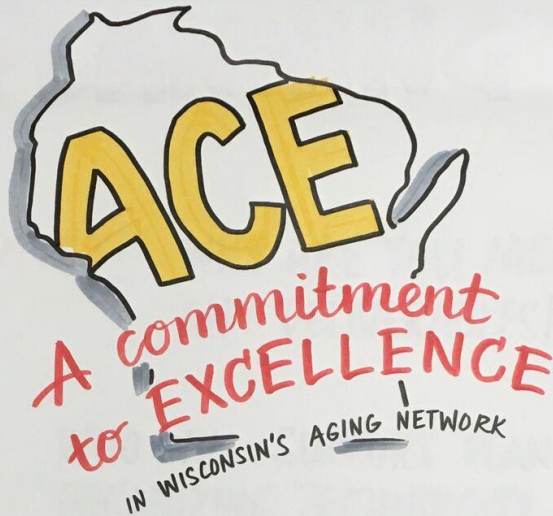


Office DEPOT

easel pad/flipchart



50 SHEETS  
6.3 SQ FT  
(59" x 34")  
2.2 FT x 2.8 FT  
(68.5 cm x 86.3 cm)  
ITEM #44-065



# HOSTING EFFECTIVE PUBLIC INPUT MEETINGS

THURSDAY • APRIL 26<sup>TH</sup>

# CHOOSING A FORMAT...

◆ CHOOSING THE "RIGHT TOOL" FOR THE JOB

◆ PULL vs. PUSH INFORMATION?

◆ GWAAR WEBSITE [HTTPS://GWAAR.ORG/PLANSAMENDMENTSASSESSMENTS](https://gwaar.org/plansamendmentsassessments)

◆ FORMATS TO CONSIDER:

- LISTENING SESSION/CMTY CONVERSATION
- FOCUS GROUP
- INTERVIEWS
- SURVEYS
- SECONDARY RESEARCH
- TOWN HALL
- GALLERY WALK
- CIRCLE
- CAFÉ CONVERSATIONS



# DOTS ... INTERACTIVE!

1. PLEASE INDICATE YOUR AGE:

40 50 60 70 70

2. HOW LIKELY ARE YOU TO USE MEAL COUPONS?

NEVER 1X/YR MONTHLY WEEKLY

3. WHAT DAY OF THE WEEK DO YOU USUALLY SHOP FOR FOOD?

MON TU WED THUR FRI SAT SUN

4. HOW SATISFIED ARE YOU WITH THE MEALS HERE?

DISLIKE SO-SO LOVE!

## WRITE FRUIT

APPLES

ORANGES

BANANAS

PEACHES

CHERRIES

## FEEDBACK & SURVEYS

## VOTING

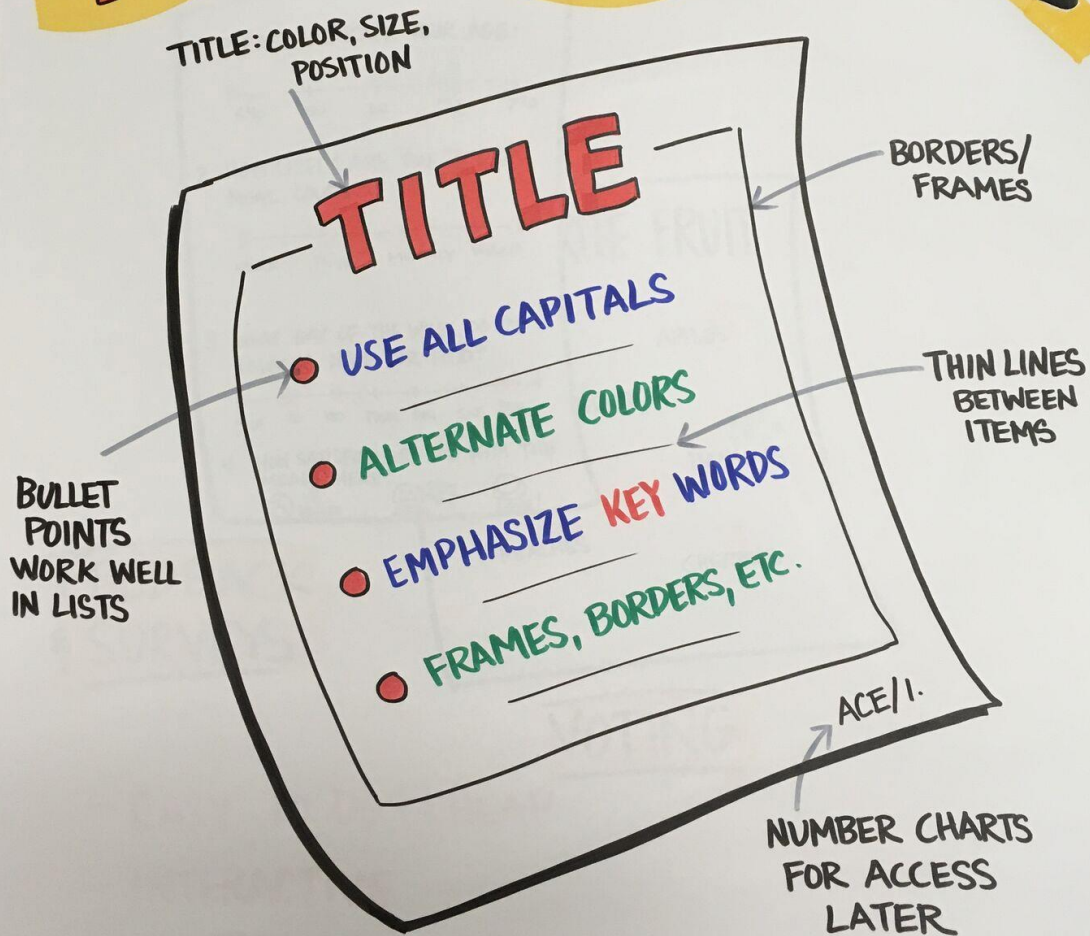
- EASY TO DO & CHEAP
- INTERACTIVE
- SHOW CLUSTERS & OUTLIERS
- PROVIDE DATA

# PLANNING

- ☐ PURPOSE WHY ARE YOU MEETING?  
ANY DELIVERABLES/OUTCOMES?
- ☐ TEAM WHO WILL SUPPORT PLANNING,  
ORGANIZING, TECHNOLOGY, ETC. ?
- ☐ TIMELINE MAP EVERY STEP, BUILD  
IN FLEXIBILITY
- ☐ BUDGET ANTICIPATED EXPENSES, ANY  
IN-KIND SUPPORT? VOLUNTEERS?
- ☐ AUDIENCE WHO DO YOU WANT TO REACH?  
HOW TO REACH THEM?  
BARRIERS & INCENTIVES



# TIPS for FLIPCHARTS





## VISUAL TECHNIQUES ADD TO YOUR TOOLKIT

**87%** OF THE  
POPULATION ARE  
VISUAL & KINESTHETIC  
LEARNERS

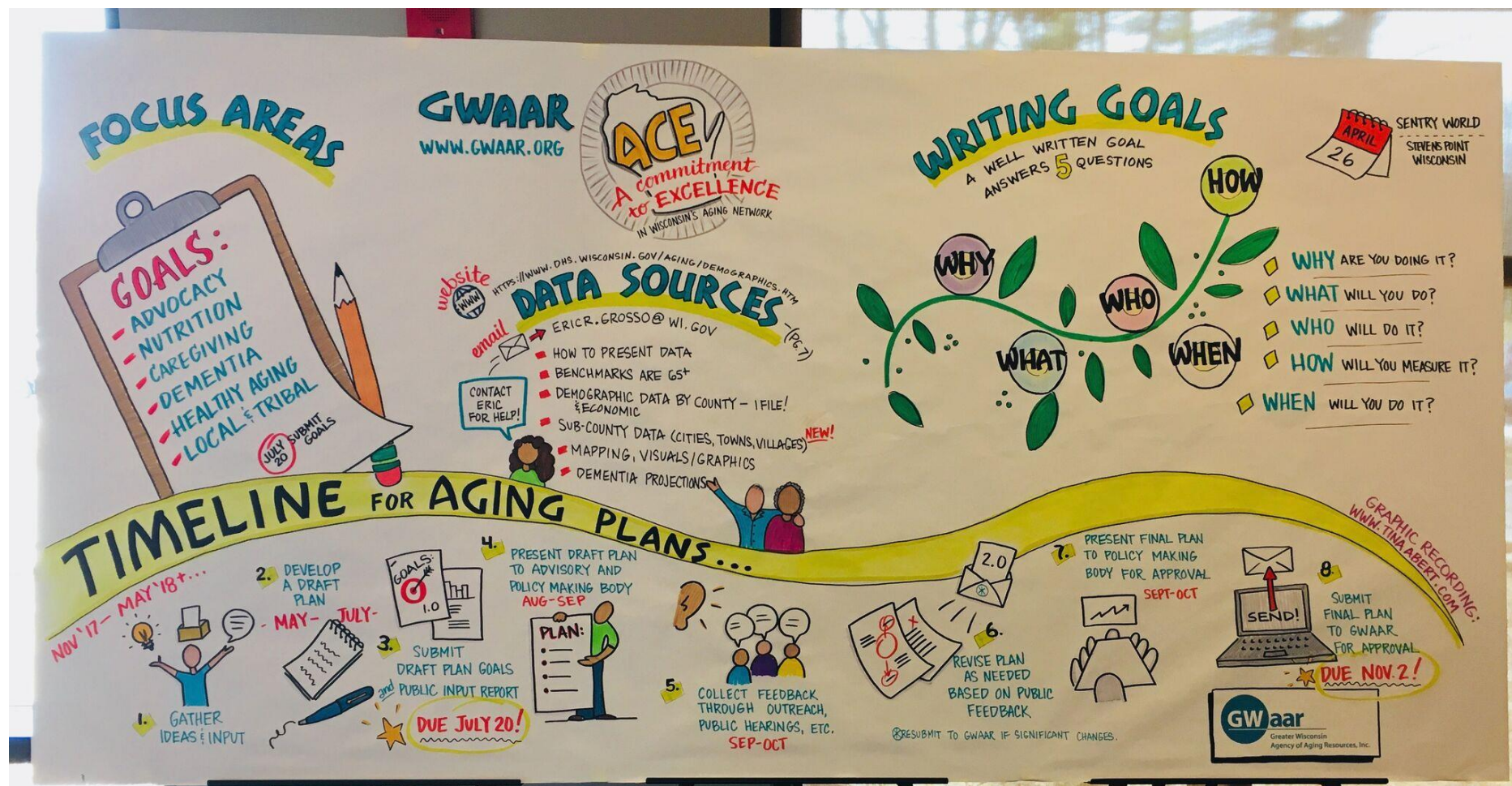
YOU DO NOT  
HAVE TO BE  
AN **ARTIST**

GREATER CLARITY  
OF KEY CONCEPTS,  
DECISIONS, AND  
AGREEMENTS

CONFLICT  
REDUCES, &  
COLLABORATION,  
EMPATHY AND  
MOMENTUM  
INCREASE



Completed Graphic Recording of our ACE Meeting – April 26, 2018





# IDEA BOARD

CONVERSATIONS TO CONTINUE and NEW TOPICS TO DISCUSS

## HOW IT WORKS

- GRAB A STICKIE
- WRITE YOUR TOPIC AND YOUR NAME
- POST IT ON THE BOARD
- AS IDEAS GET POSTED, ADD YOUR NAME WHERE YOU ARE INTERESTED

I've always  
wanted to  
brainstorm  
ideas by phone  
for caregiving  
+ dementia  
teams across

Wants on how  
to reach university  
groups  
Debbie Harsh

S. Blockett  
help to get  
caregiver quality  
members  
S. Olson

How to start  
a nutrition prog  
program where  
there isn't one  
Sabrina Hagler

Best practices  
to share  
complex  
plan with  
the public  
- Deborah Smith, Esq.

Caregiver  
collation  
projects  
Carolee Hagler  
Smith

